

...just safely installed

multitubo
systems

Established
Press
technology

Simple
connected
with gripper
clamps

Stainless
steel body
Slim with a high
performance

- **Stainless steel fittingbody:**
high performance –
low weight
- Connection-technology:
Simple and safe
- An **economic installation**
of large sizes
- **Less overhead work**
by modular pre-mounting
- **Highest Flexibility**
in each project
- **Fully compatible**
within the system
- **Pressing on the workbench,**
installing on site

MODULAR PRESS-FITTINGS 90 | 110



**More
flexibility from
16 mm up to
110 mm**



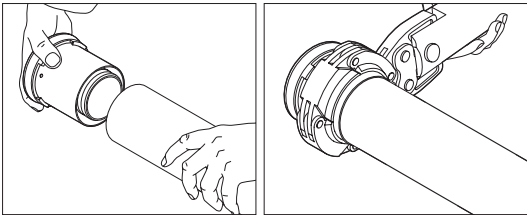
MODULAR PRESS-FITTINGS 90 | 110

FITTINGS RAPID AND FLEXIBLE ASSEMBLED!

With the modular system you are able to assemble more than 150 connections by using just 15 different parts.

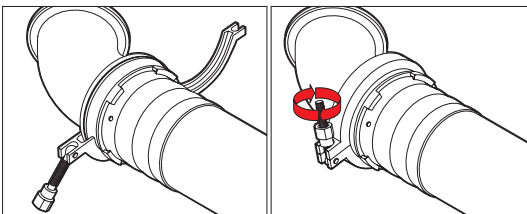
PRESSING ON THE WORKBENCH, INSTALLING ON SITE

Convenient pressing on the work-bench.



EASY ASSEMBLING BY GRIPPER CLAMPS

The connection on site can be easily done by using gripper clamps. A warrant for a permanent tight connection.



YOUR ADVANTAGES:

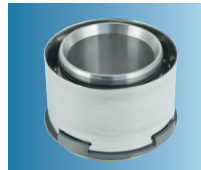
EASY HANDLING:

Weight savings up to 50% compared to metal pipe.

Lighter fittings resulting from thinner wall-thickness.

HIGHER SAFETY AT WORK:

Lower material weights increase the safety at work in heights or working over-head.



Press-Adapter

Art.-No.:	Type
M22075	75 x 7,50
M22090	90 x 8,50
M22110	110 x 10,00



Base Body Elbow 90°

Art.-No.:	Type
M23000	90°



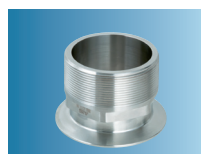
Base Body Elbow 45°

Art.-No.:	Type
M23200	45°



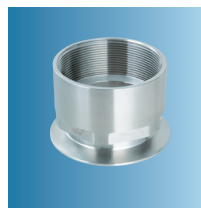
Base Body T-Piece

Art.-No.:	Type
M25000	



Connector MT

Art.-No.:	Type
M20212	2 1/2" MT
M20300	3" MT



Connector FT

Art.-No.:	Type
M21034	3/4" FT
M21200	2" FT
M21212	2 1/2" FT
M21300	3" FT



Blind Cap

Art.-No.:	Type
M29500	



Gripper Clamp with Sealing

Art.-No.:	Type
M28000	
M28010	replacement sealing